

# JOINTLY MAINTAINED CHRISTIAN SCIENCE READING ROOM OF LOS ANGELES

March & April, 2010

## Contents:

- Note from Librarian
- Upcoming Christian Science events in Greater LA (English and Spanish!)
- Donation Form

## Visit us!

- **In person:**

Two California Plaza  
Suite R-1B  
350 S. Grand Ave.  
Los Angeles, CA 90071  
(Above 4<sup>th</sup> and Olive)  
213.928.0920

9 a.m. – 4 p.m.  
Mon. – Fri.  
(Closed on major holidays)

- **Online:**

<http://christianscienceinfo.com/jointrr>

[www.facebook.com/jmcsrrla](http://www.facebook.com/jmcsrrla)

## Note from Librarian

Blossoms have begun to bloom, and new leaves are starting to bud after the rejuvenating rains we have had here in Los Angeles. It is a reminder that each moment is full of renewal and growth. May we always be “emerging gently” into newer and higher spiritual understanding as well!

The Jointly Maintained Christian Science Reading Room of Los Angeles, continues to be a place of peaceful activity, where you can study, pray and have productive discussions.

On **Saturday, March 20th from 11:00 a.m. to 1:00 p.m.** we will be hosting a meeting to share ideas about Reading Rooms with other Reading Room Librarians and workers. We will discuss what works, what could be improved upon, as well as talk about the videos [addressing lack of visitors, sales, resources (staff and funds), and how Christian Science is sometimes confused with Scientology] that were recently put out by the Christian Science Reading Room Activities department in Boston.

Please RSVP directly to me, here at the JMCSRRRLA. Feel free to call: 213.928.0920, or email me at [jmcsrrla@gmail.com](mailto:jmcsrrla@gmail.com).

Thank you,  
Ame Schneider

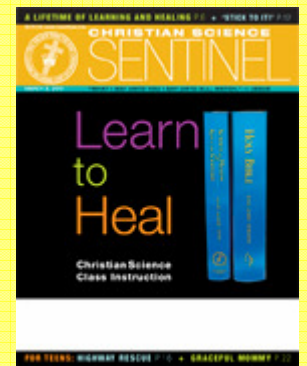
Study Edition  
Bible Lesson = \$12.50



The Christian  
Science Journal = \$8.75



Christian Science  
Sentinel = \$4.12



The Christian Science  
Monitor = \$3.85



# Upcoming Events - Sentinel Radio Programs:

## Christian Science Sentinel Radio Edition

March 13 – 19, 2010

God is real—tackling atheism [#1011]

March 20 – 26, 2010

TLC in later years [#1012]

March 27 – April 2, 2010

What's influencing me? [#1013]

Listen **Sunday mornings:**

9:00 a.m. on KVTA 1520 AM. Ventura.

**Sentinel Radio ... new time ...  
new station ... same great program!**

**Find answers to life's challenges!**

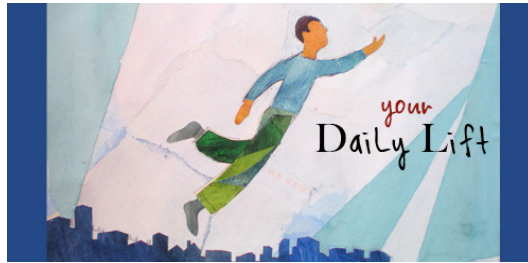
The *Sentinel — Radio Edition* is a weekly program broadcast around the world and locally on Sundays at 7:30 a.m. Each inspiring half-hour program explores spiritual healing today and includes testimonies of Christian Science healing. You can also listen to *Sentinel Radio* on FM cable at 91.3 and on the Internet at [www.am650radio.com](http://www.am650radio.com).

Also broadcasts are available on the Internet through “audio streaming.” You can hear the programs on your computer by entering one of the web addresses of the broadcast stations in your browser at the time of the broadcast.

Additional listings of stations offering audio streaming can be found at [www.cssentinelradio.com](http://www.cssentinelradio.com) and at [www.csenews.us/res/streaming](http://www.csenews.us/res/streaming). The stations listed below were selected because they offer audio streaming at varying times and their “Listen Live” services are easier to access.

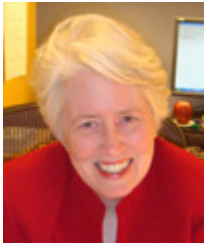
<u>Time on Sunday</u>	<u>Locality</u>	<u>Station</u>	<u>Web Address</u>
6:30 am PST	Denver	KHOW	<a href="http://www.khow.com">www.khow.com</a>
7:00 am PST	Seattle	KVI	<a href="http://www.kvi.com">www.kvi.com</a>
7:30 am PST	Sacramento	KSTE	<a href="http://www.kste.com">www.kste.com</a>
7:30 am PST	Vancouver	AM650	<a href="http://www.am650radio.com">www.am650radio.com</a>
8:00 am PST	Bakersfield	KERN	<a href="http://www.kernradio.com">www.kernradio.com</a>
9:00 am PST	Ventura	KVTA	<a href="http://www.kvta.com">www.kvta.com</a>

# Upcoming Events - Daily Lift & Live Audio Chat



The audio series called “Your Daily Lift” runs Monday through Friday every week. They are like the "Daily Thoughts" from [www.spirituality.com](http://www.spirituality.com) - and you can have them emailed to you for free if you register for them. Each episode is about two minutes long and is brought to you by the members of the Christian Science Board of Lectureship. Listen to these uplifting thoughts-for-the-day at this link: <http://christianscience.com/blogs/daily-lift/>

## Prayer for relief of world hunger



**Ethel Baker**, C.S.B. Tuesday, March 16, 2010 11:00 a.m. to 12:00 p.m.

Although women in developed countries have more rights than those in other parts of the world, even in those countries the stresses of running a family and sometimes being the only breadwinner can be challenging. For women in developing countries, access to education and employment can be severely limited by local customs and religious beliefs. In war-torn areas, sexual violence is common. Yet even in repressive cultures, women are striving to improve their lives and to help society through, among other things, participating in microfinance programs that enable them to establish small businesses.

No matter where in the world you live, if you’re looking for insights into understanding the spiritual rights you have from God—and how these can improve your life—this chat will offer healing ideas. Bring your questions and join in!

**About Ethel Baker:** Ethel is a practitioner and teacher of Christian Science from Buffalo, New York.

[More information and for past chats available as podcasts: www.spirituality.com/chats](http://www.spirituality.com/chats)

# Bible Study, Reading Room Update, and Events for Young Adults:

## Bible Study in Downtown Los Angeles

**March 18** from 12:15 p.m. to 1:00 p.m. at the Jointly Maintained Christian Science Reading Room of Greater Los Angeles. Join us in our self-directed, small group discussions on Thursdays every other week. All are welcome to share their understanding of the Bible. We will continue our study of Numbers. Public transportation is highly recommended.

More info: 213.928.0920, [jmcsrcrla@gmail.com](mailto:jmcsrcrla@gmail.com),  
350 S. Grand Ave., (above 4<sup>th</sup> and Olive) Los Angeles

## Bible Study in Brentwood

**April 12** from 6:30 p.m. to 8:30 p.m., come to study and share insights of two chapters of John's Gospel. Be prepared to discuss chapters 19 and 20 this session. Meet in the Sunday School room of Tenth Church of Christ, Scientist, Los Angeles. All are welcome! Join at 6 p.m. for an Agape (potluck) dinner.

More info: 310.820.2014, [madelon@milestonesinc.com](mailto:madelon@milestonesinc.com)  
1133 S. Bundy Dr., Los Angeles

## Branch Church Reading Room Update:

\*\* Please note the expanded hours of the Westwood Village Christian Science Reading Room of Twenty-Eighth Church of Christ, Scientist Los Angeles:

Monday: 10:00 a.m. – 9:00 p.m.

Tuesday: 10:00 a.m. – 9:00 p.m.

Wednesday: 10:00 a.m. – 7:00 p.m.

Thursday: 10:00 a.m. – 9:00 p.m.

Friday: 10:00 a.m. – 7:00 p.m.

Saturday: 11:00 a.m. – 5:00 p.m.

Sunday: 12:30 p.m. – 4:30 p.m.

Holidays: 11:00 a.m. – 2:00 p.m.

More info: 310.208.3814, <http://28ccs.com/>  
1125 Glendon Ave., Los Angeles

## Comfortable Church Fellowship for Young Adults:

\*\***Operation Testimony Meetings** (OTMs) are held on the first Wednesday of each month! Church hop to a new location and go out to dinner or dessert afterwards with *all* interested in participating.

Check out this Yahoo Group for more information: <http://groups.yahoo.com/group/discoverybound/>

\*\*Also, those in their late teens, twenties, and early thirties are welcome to join the discussion group that meets on the **Second Sunday** of the month from 7:00 p.m. to 9:00 p.m. at the San Juan Capistrano Society.

Check out this Yahoo Group for more information: <http://groups.yahoo.com/group/ssinsanjuan/>

\*\* Meet with other 20-30's on the **Fourth Sundays** of each month at 6:00 p.m. in the Reading room for a 30-45 min. discussion after the 5:00 p.m. contemporary church service at the Newport Beach Christian Science Church. Feel free to bring drinks or snacks to share.

More info: <http://www.cs-nb.com/>  
3315 Via Lido, Newport Beach, CA

## March Lectures and other Christian Science Events:

### Golden Rule

**March 18** at 7:30 p.m. Christian Science practitioner and lecturer Timothy Myers will speak in the church auditorium of First Church of Christ, Scientist Newport Beach. Parking is free and child care will be provided!

More info: 949.673.1340, <http://www.cs-nb.com/>

3303 Via Lido, Newport Beach

### The Healing Power of Understanding Your Spiritual Identity

**March 21** at 2:00 p.m. Christian Science practitioner, teacher, and lecturer David Stevens will speak in the church auditorium of Second Church of Christ, Scientist, Whittier.

More info: 562.693.9116

8705 South Catalina Ave., Whittier

### The Resurrecting Power of Prayer

**March 25** at 7:30 p.m. Christian Science healer and teacher Maryl Walters will give a spiritual talk at the Barbri Lecture Hall, sponsored by Fourteenth Church of Christ, Scientist, Los Angeles.

More info: 310.202.0020, <http://www.14thchurch.com/>

3280 Motor Ave., Los Angeles

### Committee on Christian Science Work in Los Angeles County Institutions General Meeting

**March 26** at 8:00 p.m. at the First Church of Christ, Scientist, Pasadena you will have the opportunity to meet workers and Chaplains and to hear fruitage from lectures, services, and one-on-one interviews given in the jails.

More info: <http://www.christianscienceinfo.com/institutions/>

80 South Oakland Ave., Pasadena

### Celebration of Christian Science

**March 28** from 5:00 p.m. to 6:30 p.m. Living Love: Christian Science in Action invites you to The Pasadena Westin Hotel. This is an opportunity to worship together and celebrate the blessings of Christian Science in an energized, loving and informal setting. Join the Living Love CS Band in singing contemporary versions of hymns and praise music. The Bible Lesson Sermon will be read, followed by expressions of gratitude and inspiration shared by audience participants. If you like to sing and would like to participate in a special choir for that day, please RSVP and plan to show up at 4:15 p.m. to learn your part. Street parking is available for free or for a fee of \$5 at the hotel. For updates on upcoming activities and events, consider "Joining the Mailing List."

More info and to RSVP: [www.LivingLoveCS.org](http://www.LivingLoveCS.org), [www.facebook.com/livinglovecs](http://www.facebook.com/livinglovecs),

[LivingLoveCS@gmail.com](mailto:LivingLoveCS@gmail.com)

191 North Los Robles, Pasadena

## April Lectures and other Christian Science Events

### Nursing Discovery Day & Caring For A Loved One

**April 3** at 9:30 a.m. come learn about health care issues important to Christian Scientists at Broadview, a Christian Science Nursing Facility. Please RSVP to this event, where you will learn how nursing brings spiritual growth; the metaphysical foundation of care; practical guidance for family members & care committees – what to do and who to call.

More info and to RSVP: 323.221.9174

4570 Griffin Ave., Los Angeles

### Community Reading of *Science and Health with Key to the Scriptures*

**April 4** from 12:00 p.m. to 1:00 p.m. and the first Sunday of each month, meet at Third Church, of Christ, Scientist, Los Angeles (downtown) after their 11 a.m. – 12 p.m. service to read and discuss the textbook. A reading agenda has been prepared through June of 2010. Please call the Reading Room for the schedule of pages to be read, and join Third Church as they continue to observe their Centennial commemoration.

More info: 213.622.3639

730 S. Hope St., Los Angeles

### Southern California Reader's Workshop

**April 17** from 8:30 a.m. to 4:15 p.m. at First Church of Christ, Scientist, Newport Beach there will be an interactive morning presentation from 8:30 a.m. to 11:30 a.m. with guest presenter, Evelyn Brookins who is the co-owner of Jessica Driver's Reading Aloud Institute™ and publisher of Jessica Driver's book, *Speak For Yourself*™. Additionally, there will be six one hour workshops conducted by past readers in the afternoon from 1:00 p.m. to 4:15 p.m. Each subject will be presented 3 times – choose 3 of 6 – includes notes, references and source lists:

1) Reading *Science and Health* conversationally, 2) Reading Bible stories, 3) Putting together a Wednesday Reading, 4) Platform Mechanics (Marking reader's books, stacking books, rehearsals, preparing notices, etc), 5) Scriptural Selection, Scientific Statement of Being, I John, Benedictions, Selection & reading of hymns, and 6) Pronunciation of Bible names and commonly mispronounced words from *Science and Health*

COST: \$25 for All Day & includes copy of *Speak for Yourself* by Jessica Driver (Attendance limited to 50), \$10 for Morning Session only – book not included (Morning session may register online or pay at the door and there is no limit on number of attendees)

More info: 949.916.5086, [evelyn@brookinsandsymons.com](mailto:evelyn@brookinsandsymons.com), Register online with credit card at

[www.readingaloudinstitute.com](http://www.readingaloudinstitute.com)

3303 Via Lido, Newport Beach

# Upcoming Events - Evening Church Services and Resources

Thirty-sixth Church of Christ, Scientist, Los Angeles at 8:00 p.m.

More info: 818.761.4322 or <http://36thchurch.tripod.com/>

4032 Whitsett Avenue, Studio City

First Church of Christ, Scientist, Newport Beach at 5:00 p.m.

More info: 949.673.1340, <http://www.cs-nb.com/>

3303 Via Lido, Newport Beach

First and Fourth Churches of Long Beach invite you to their 5:00 p.m. evening services on Sundays, as well as their regular 9:30 a.m. and 11:00 a.m. Sunday morning services. Plenty of restaurants close by!

More info: 562.424.5562

3629 Atlantic Ave., Long Beach, near Atlantic Ave. exit (North 405 Freeway), 3 doors North of Jack-n-the-Box

## Options for hearing the Bible Lesson and Sentinel Radio on the Phone:

### **1) First Church of Christ, Scientist in Newport Beach:**

- Call in within the ten minutes before the 10 a.m. Sunday morning services or the 7:30 p.m. Wednesday evening meetings

- Dial 218.936.7979 and use the participant access code 542230#

- More info: <http://www.cs-nb.com/>

### **2) Christian Science Society in San Juan Capistrano:**

-To participate by phone, please dial: 605.475.6350 Access code: 12111#

(Be sure to press the # sign.)

-To participate via Skype on the internet, please dial: +9900827047193996

(Room number 7193996)

-Service times are Pacific Standard or Daylight Time:

Sunday Service: 10:00 a.m. Wednesday Evening Meeting: 7:30 p.m.

More info: <http://www.csinsanjuancapistrano.com>

### **3) Weekly Bible Lesson, listen 24 hours on telephone 323.644.2112:**

- The Christian Science Joint Media Committee of Southern California hosts a 24-hour Bible Lesson telephone line 323.644.2112 offering an introduction to the weekly Lesson, and the ability to select each of the individual sections in the Lesson.

### **4) 24/7 Sentinel Radio and Bible Lesson line. 714.442.4102:**

- Select #1 for the Sentinel Radio and #2 for the Bible Lesson. Courtesy of the Christian Science Joint Media Committee of San Diego County.

## **Bible Resource!**

Bible Gateway.com is a tool for reading and researching scripture online—all in the language or translation of your choice! It provides advanced searching capabilities, which allow you to find and compare passages in scripture based on keywords, phrases, or a bible verse. As you browse for a translation, you will see many familiar names that have been used in recent lessons, such as The Message, Amplified Bible and the New International Reader's Version. Find them all at [www.biblegateway.com](http://www.biblegateway.com).

## Reuniones y Programas en Español

### Grupos para estudiar la Lección Sermon en Español

- 1) Sala de Lectura en Inglewood/Westchester cada viernes a las 7:30 p.m.  
6218-B W. Manchester Ave. en Westchester, 90045
- 2) Broadview, cada primer y tercer Viernes a las 7:30 p.m.  
4570 Griffin Ave., Los Angeles, 90031

Venid a compartir y a entender mejor nuestra relación con Dios.

Mas información: 866.374.3747 (gratis)



### Servicios de la Christian Science en ESPAÑOL Y INGLÉS

Allí se puede oír personas que hablan de sus experiencias de curación por medio de la oración en Christian Science: **Los Miércoles** a las 7 de la tarde en Third Church of Christ, Scientist.

Mas información: Servicios Dominicales de la Christian Science en ESPAÑOL vaya a [www.csdirectoryespanol.com](http://www.csdirectoryespanol.com) (se puede oírlos por teléfono) favor de llamar 213.623.2185

730 South Hope Street, Los Angeles

### ¡Escuche! EDICIÓN RADIAL

Entrevistas pensativas de personas que han descubierto como el amor de Dios responde a todas nuestras necesidades y sana todos los problemas y las enfermedades en **KHJ** – La Ranchera, en el **930** de su dial A.M., **todos los Domingos** a las 7 de la mañana, [www.laranchera.com](http://www.laranchera.com).

**Marzo 21** Eliminando preocupaciones *Overcoming stress*

**Marzo 28** Pascua: divina fuerza renovadora *Easter: Divine renewing strength*

Spanish Outreach Committee / Christian Science Joint Media Committee

Mas información: favor de llamar gratis a 866.374.3747

### Artículos Metafísicos en Espanol

[www.elheraldocc.com](http://www.elheraldocc.com), [www.espiritualidad.com](http://www.espiritualidad.com), <http://www.spirituality.com/herald/index.jhtml>

### Desde La Iglesia Madre

Desde La Iglesia Madre se transmite por el Internet cada día de la semana el servicio **todos los domingos** grabado en español. Para escucharlo copiarse lo siguiente en la ventanilla buscadora del Internet: [http://www.tfccs.com/bostonactivities/spanish\\_sundayservice.jhtml](http://www.tfccs.com/bostonactivities/spanish_sundayservice.jhtml).

También, entrando al Internet por <http://www.csdirectoryespanol.com> conseguirá el título "Iglesia Interactiva." Debajo ese título, haga clic donde dice y abra las instrucciones en español que explican como escuchar el servicio en español cuando se actualice los domingos a las 11:30 A.M. hora de California.

### ¡Y Más!

Would you like to join Spanish speakers on a teleconference call on **Sundays from 5 p.m. to 6:15 p.m.?** They read and discuss the Christian Science Bible Lesson. You can use your free cell phone minutes on the weekend! Call 213.862.1300, and the access code is: 838537.

## Donation Form:

If you enjoy this spiritual resource, and would like to help us continue to serve the Greater Los Angeles community, your monetary donation would be much appreciated! Please consider becoming a member of the Committee of 500 or donating to the Perpetuity Fund!

Several years ago, members of the JMCSRRLA Committee figured that if 500 people in the Los Angeles area contributed an annual amount of \$120, or a monthly amount of \$10, that the JMCSRRLA would be able to completely meet its financial responsibilities every month. The idea took off, and the name "Committee of 500" stuck.

Unfortunately, the Committee of 500 has never reached the full potential of its name. But, with your help, we can change that. Would you be able to give at least \$120 a year, or at least \$10 a month? Could you help spread the word by sharing this "Friends of the JMCSRRLA Newsletter" with at least one more person? Thank you for taking this opportunity to actively support the JMCSRRLA!

You are also encouraged to remember the JMCSRRLA in your will. What a wonderful legacy to leave to the world in such great need of the Truth. Stocks and bonds are also gratefully received. For amounts of \$1,000 or greater, it is recommended that such donations be funneled through a branch Church of Christ, Scientist and designated for the JMCSRRLA Perpetuity Fund.

You are invited to make checks out to JMCSRRLA, or consider using your Visa, MasterCard, or American Express credit card for your tax-deductible gift.

Please complete the information below and fax it to: 213.928.0920, or mail it to: JMCSRRLA, 350 S. Grand Ave., Ste. R-1B, Los Angeles, CA 90071-3461.

*"The systematized centres of Christian Science are life-giving fountains of truth."*

*Mary Baker Eddy, page 113:28 of Miscellaneous Writings*

- I wish to **JOIN** the Committee of 500
- I wish to **RENEW** my annual/monthly membership in the Committee of 500

**Please write clearly:**

**Name:** \_\_\_\_\_

**E-mail address:** \_\_\_\_\_

**Address:** \_\_\_\_\_

\_\_\_\_\_

**Best phone number to reach you:** \_\_\_\_\_

**Payment options:**

1) Included is a *check* for: \_\_\_\_\_ [OR]

2) I authorize the JMCSRRLA to debit my *credit card (or debit card)* as follows:

**Amount:** \_\_\_\_\_ **Circle when:** Monthly on the 15th, this month only

**Circle kind of card:** Visa MC AmEx **Expiration date:** \_\_\_\_\_

**Account number:** \_\_\_\_\_

**Signature:** \_\_\_\_\_

**Today's Date:** \_\_\_\_\_